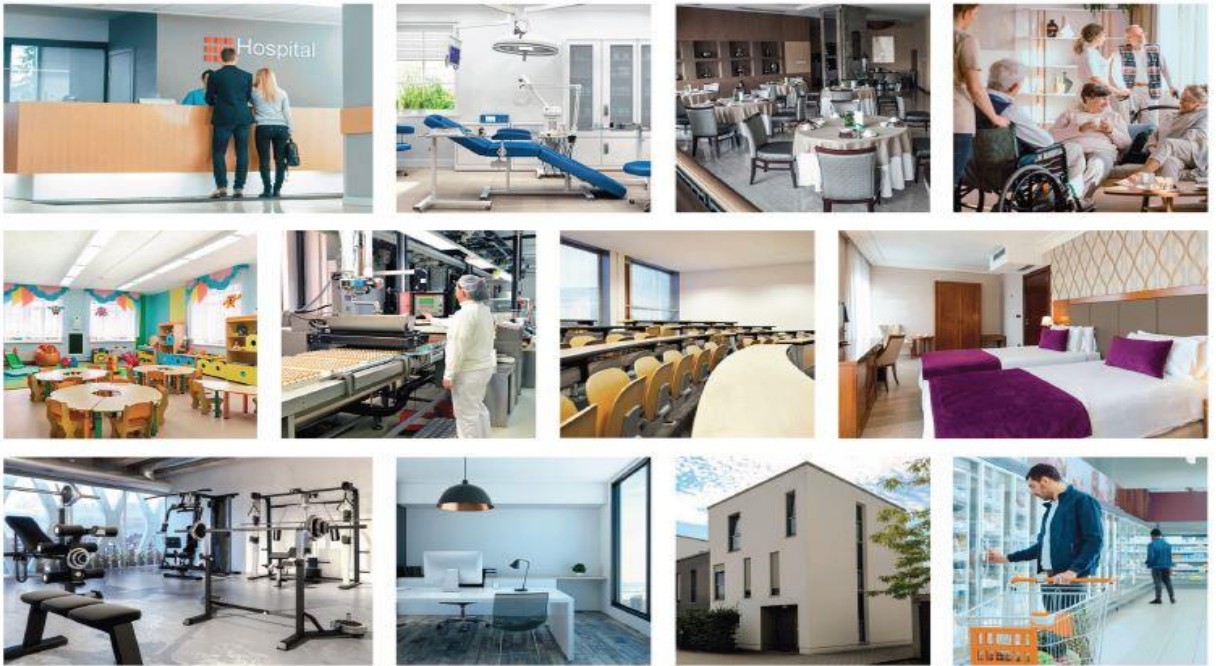


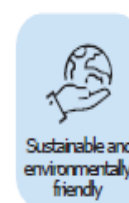
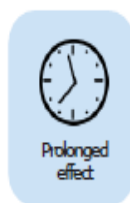
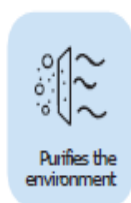
Q+TERMIK ECOAIR 3.0 KROMATIC

CHROMATIC PHOTOCATALYTIC PAINT FOR INTERIORS

The application of this paint has a high decontaminating efficiency and a self-cleaning capacity that preserves the aesthetics of the surface, reducing maintenance costs, with a strong bactericidal and deodorising effect of high durability. It has a high quality and aesthetically pleasing professional matt finish with a choice of soft customised colours. Suitable for surfaces such as cement, concrete, monolayer, plasterboard, plaster, brick, etc., for interiors and facades, creating spaces with purer air.



ADVANTAGES



HAZARD IDENTIFICATION



Solvent Free



VOCs Free



Non corrosive

COLORLESS PHOTOCATALYTIC COATING TO USE

ECOAIR 3.0 KROMATIC: : White photocatalytic paint with a high decontaminating efficiency for interiors and exteriors.

Yield: 6 - 8 m²/L

RECOMMENDED APPLICATION METHOD

- Roller, brush or spray gun

APPLICATION GUIDE

- 1- Shake well the content of the container before painting.
- 2- The surface must be clean, dry, well adhered and free of impurities such as mold, algae, lichens or salts.
- 3- In the case that the surface already has an existing paint, verify that the product is compatible with this paint.
- 4- It is recommended to apply a coat of paint before applying the chromatica as a primer for better coverage.
- 5- Apply only one coat of photocatalytic product.
- 6- Special care should be taken to ensure that the photocatalytic paint is always the last layer, being exposed to the elements and under no circumstances should any surface coating be applied on top of it.
- 7- Allow to dry for at least 60 minutes_

ENVIRONMENTAL CONDITIONS FOR APPLICATION

- 1- **Temperature:** Apply the product avoiding extreme temperatures.
- 2- **Humidity:** In the case of exteriors, avoid applying the product on very humid or rainy days, since humidity can interfere with proper drying.
- 3- **Exposure to light:** Photocatalytic technology is activated by natural or artificial light, so it is recommended that treated surfaces are exposed to a good light source to maximize its effect.

SAFETY DURING APPLICATION

- 1- **Personal protective equipment:** Wear gloves, mask and safety glasses to avoid direct contact with the product.
- 2- **Product storage:** Keep the product in a cool, dry place away from direct sunlight. Be sure to close containers tightly after use to avoid deterioration.

© Copyright. EXCLUSIVAS JUMACAR QUIMIPLUS SL. All rights reserved

 **MADE IN SPAIN**

